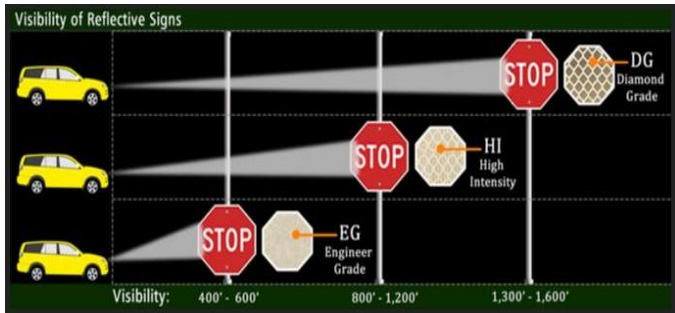


ROAD SIGNAGE AND BARRIER REQUIREMENTS (with reference to ATJ 2C/85)

REFLECTIVE STICKERS



Signage must be equipped with High Intensity Prismatic (HIP) reflective sticker – Diamond grade to ensure good visibility particularly at night.

TEMPORARY SIGNS DESIGN



Temporary signs are used to alert road users of specific hazards encountered when temporary operations are underway

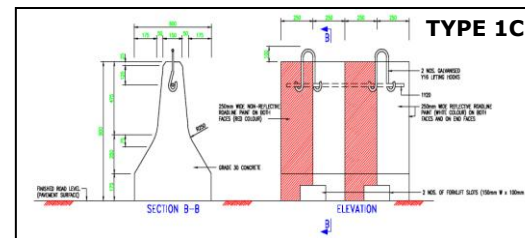
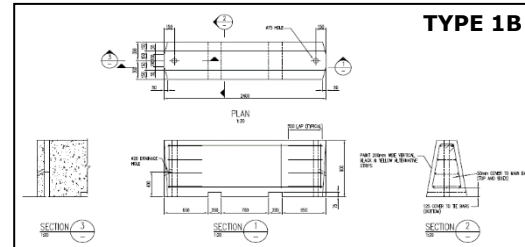
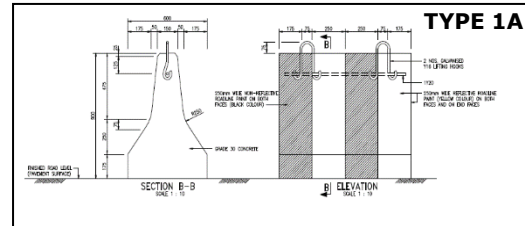
WARNING LIGHTS



At least 2 beacon lights (Revolving Light Type) are installed on barricade facing traffic. 1 beacon light is installed for every 0.3 m on barricade at the side of traffic flow.

BARRIERS

Barrier for Long Term Closure



Type: Concrete Barrier

Height: 900mm

Width: 600mm

Buffer Zone (Longitudinal): At least 10m

Buffer Zone (Lateral): 1m

Barrier for Short Term Closure (Approximately 2 Hours)

Type: Plastic Barrier



Standard size: 1000(L) x 500(W) x 800mm(H)



Height: 450mm minimum

Contact:

- 1) Please communicate with Operations for any road closure
- 2) Before commencement of any road closure please attain permit and JSA from HSE